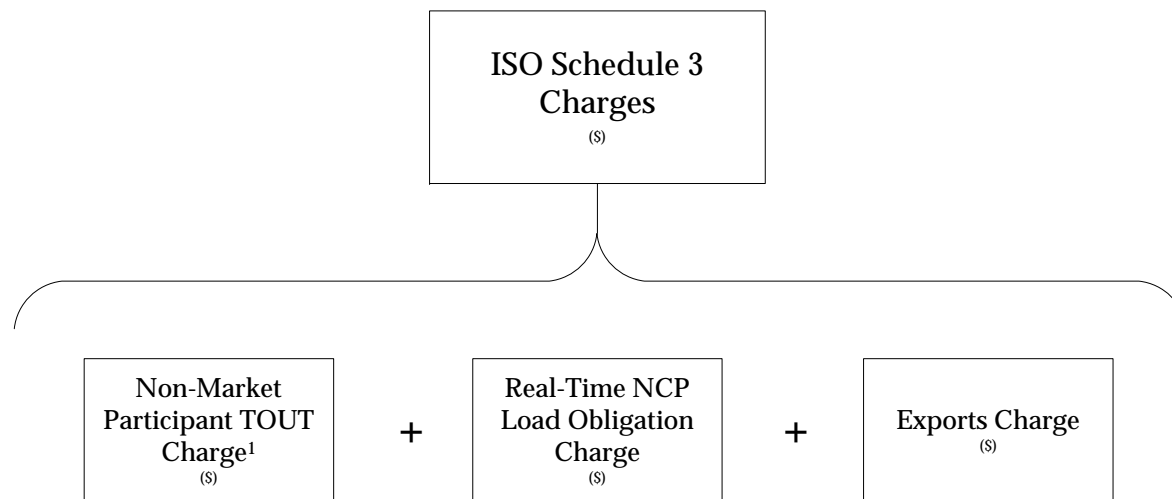


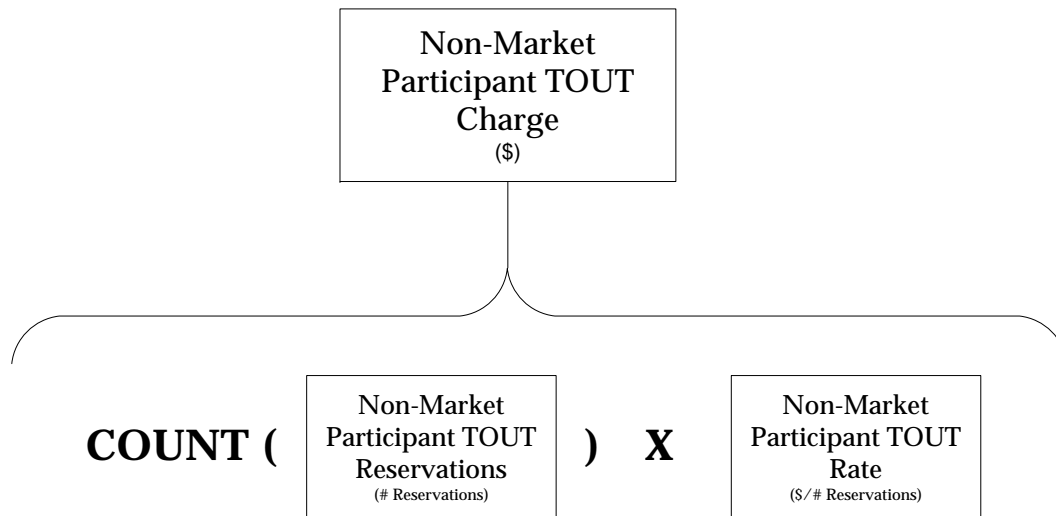
Note: The relevant Markets, Services and Transmission Tariff and the relevant Market Manuals, Operating Procedures and Planning Procedures shall govern.

Reference Guide **Calculation Summary**



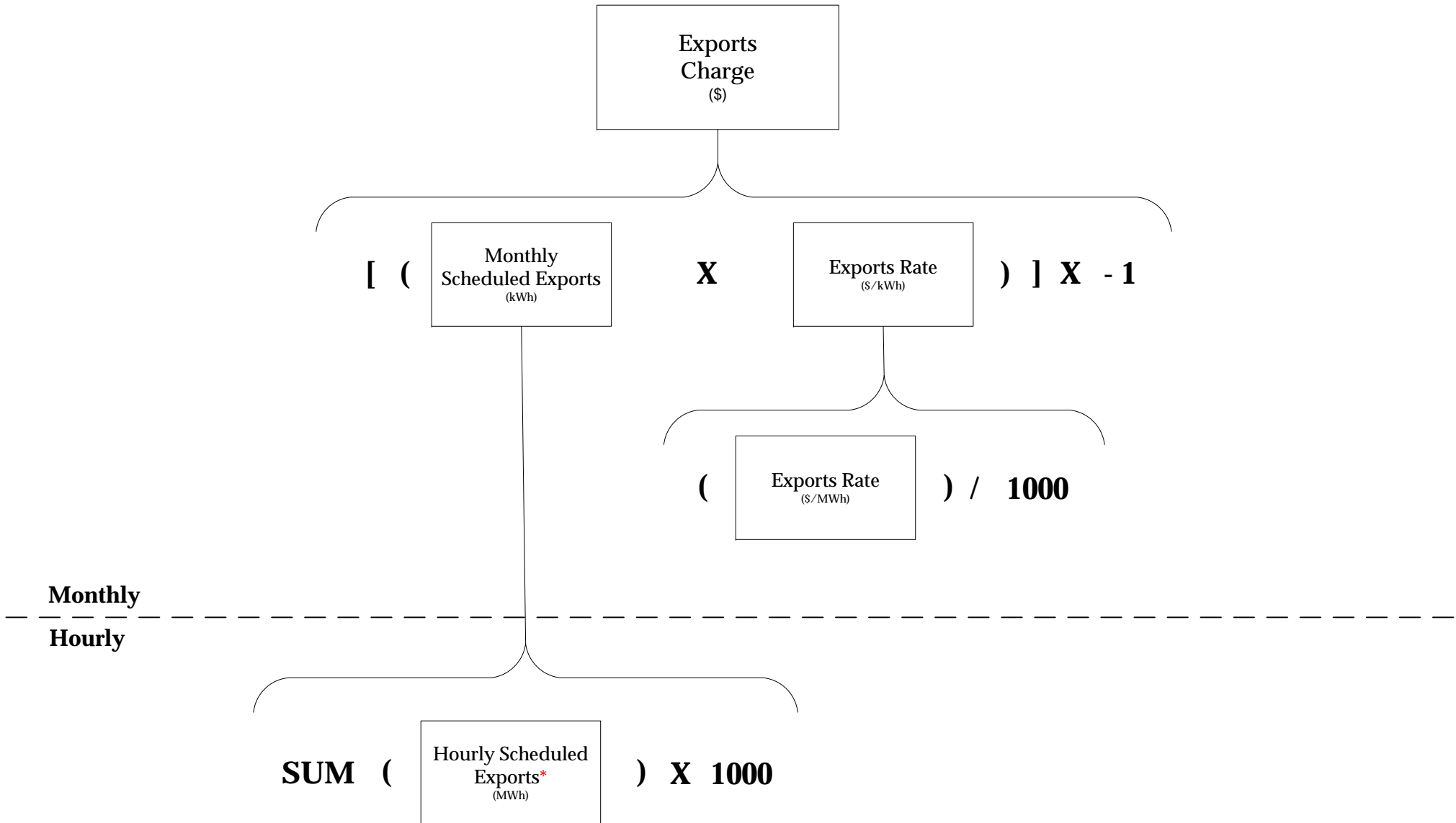


¹Listed on MIS report TR_SCH3P1 as: Through/Out Total



Note: The relevant Markets, Services and Transmission Tariff and the relevant Market Manuals, Operating Procedures and Planning Procedures shall govern.

Real-Time NCP Load Obligation Charge Calculation Summary



*excludes Coordinated External Transactions